

- LEGEND:**
- WATER QUALITY MONITORING STATIONS
- COOLING WATER INTAKES**
- 01 HONG KONG CONVENTION AND EXHIBITION CENTRE EXTENSION
  - 02 TELECOM HONG KONG ACADEMY 101 PERFORMING ARTS / SAITLWAY CENTRE
  - 03 HONG KONG CONVENTION AND EXHIBITION CENTRE PHASE 1
  - 04 WAN CHAI TOWER AND GREAT WALL CENTRE
  - 05 SUN HANG KAI CENTRE
  - 06 PROPOSED EXHIBITION STATION / WORLD TRADE CENTRE
  - 07 WINDSOR HOUSE
  - 08 CITY SQUARE
  - 09 PROVIDENT CENTRE
  - 102 PROPOSED HERPA EXTENSION
  - 103 SUN HANG KAI CENTRE / REPRODUCTION
  - 107 WINDSOR HOUSE / TEMPORARY REPRODUCTION
- WSD SALT WATER INTAKE**
- #201 WAN CHAI
  - #401 WAN CHAI (REPRODUCTION)
  - #501 CEMILION SQUARE
  - #620 SA BAY
  - #6210 CHA KANG LINC
  - #6215 SA BAY ISD
  - #6217 CLARRY BAY
  - #6219 SWING BAY
  - #6220 KENNEDY TOWER

DESIGNATED PROJECT'S TOP	WORK CONTRACT	DESIGNATED PROJECT NUMBER	COMPLETION (APPROXIMATE)
SP1 - CENTRAL WAN CHAI STAFFS WORKS INCLUDING 15 ROAD TUNNEL AND SLOPE ROADS	CE00 CONTRACT NO. HK/2009/01	SP1 - SP3 - SP6	APRIL 2010
SP2 - ROAD P2 AND OTHER ROADS (PRIMARY + DISTRICT DISTRIBUTION ROADS)	CE00 CONTRACT NO. HK/2009/02	SP1 - SP3 - SP5	APRIL 2010
SP3 - PERMANENT AND TEMPORARY ROAD MAINTENANCE WORKS INCLUDING ASSOCIATED DRAINAGE WORKS IN WAN CHAI DEVELOPMENT PHASE 11 - WSD11 AREA	CE00 CONTRACT 3	SP1 - SP3	END 2011
SP4 - TEMPORARY BRIDGE-SHELTER 1 (SP4 NOT TO BE IMPLEMENTED)	CE00 CONTRACT 4	SP1 - SP3	END 2011
SP5 - WAN CHAI EAST SEWAGE DUTY ALL	CE00 CONTRACT 5	SP3	2010
SP6 - DISCREET FOR THE CROSS-HARBOUR WATER MAINS	HYD CONTRACT NO. HY/2009/11	SP3	18 AUGUST 2010
	HYD CONTRACT NO. HY/2009/15	SP1 - SP3	SEPTEMBER 2010
	HYD CONTRACT NO. HY/2009/16	SP1	OCTOBER 2010
	HYD CONTRACT NO. HY/2009/18	SP1	NOVEMBER 2010
	HYD CONTRACT 12	SP1 - SP3	MID 2010



**CE00** 土木工程師事務所  
Civil Engineering and Development Department

**WAN CHAI DEVELOPMENT PHASE II**

WAN CHAI DEVELOPMENT PHASE II, PHASE CENTRE - SANITARY FITTING WORKS (STAGE 1) AND TESTING WORKS (STAGE 1)

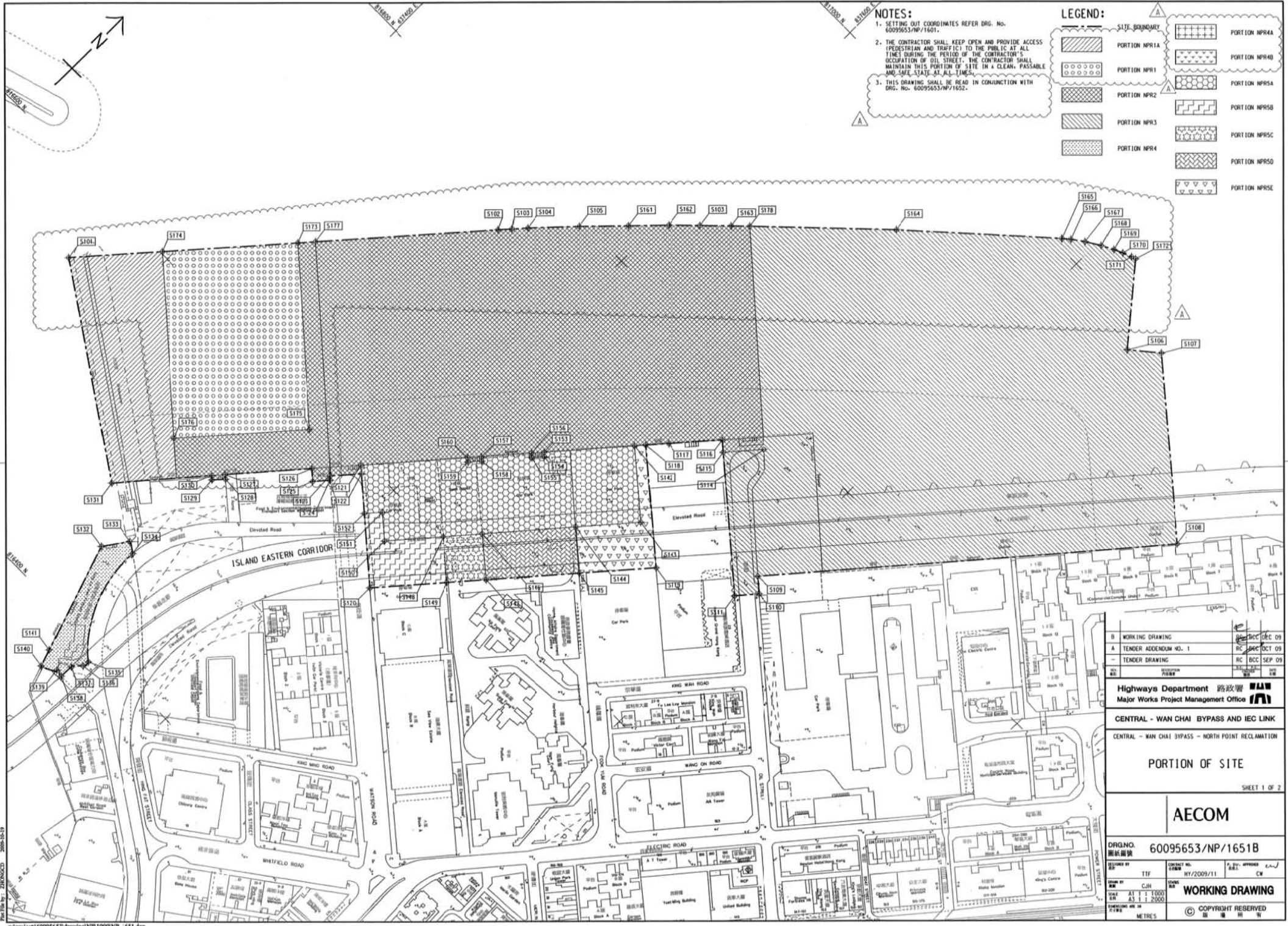
**LOCATIONS OF WATER QUALITY MONITORING STATIONS**

**AECOM**

DWG NO: 60041297/C5/SK001

DATE: 2010	SCALE: 1:1000	DATE: 2010	SCALE: 1:1000
BY: [Signature]	CHK: [Signature]	DATE: 2010	SCALE: 1:1000

© COPYRIGHT RESERVED



**NOTES:**

1. SETTING OUT COORDINATES REFER DRG. No. 60095653/NP/1601.
2. THE CONTRACTOR SHALL KEEP OPEN AND PROVIDE ACCESS (PEDESTRIAN AND TRAFFIC) TO THE PUBLIC AT ALL TIMES DURING THE PERIOD OF THE CONTRACTOR'S OCCUPATION OF OIL STREET. THE CONTRACTOR SHALL MAINTAIN THIS PORTION OF SITE IN A CLEAN, PASSABLE AND SAFE STATE AT ALL TIMES.
3. THIS DRAWING SHALL BE READ IN CONJUNCTION WITH DRG. No. 60095653/NP/1652.

**LEGEND:**

[Dotted pattern]	PORTION NPR1	[Cross-hatch pattern]	PORTION NPR4
[Diagonal lines /]	PORTION NPR1A	[Diagonal lines \]	PORTION NPR4A
[Vertical lines]	PORTION NPR2	[Horizontal lines]	PORTION NPR5
[Diagonal lines /]	PORTION NPR3	[Diagonal lines \]	PORTION NPR5A
[Diagonal lines /]	PORTION NPR4	[Diagonal lines \]	PORTION NPR5B
[Diagonal lines /]		[Diagonal lines \]	PORTION NPR5C
[Diagonal lines /]		[Diagonal lines \]	PORTION NPR5D
[Diagonal lines /]		[Diagonal lines \]	PORTION NPR5E

B	WORKING DRAWING	REV	DEC 09
A	TENDER ADDENDUM NO. 1	RC	OCT 09
-	TENDER DRAWING	RC	SEP 09

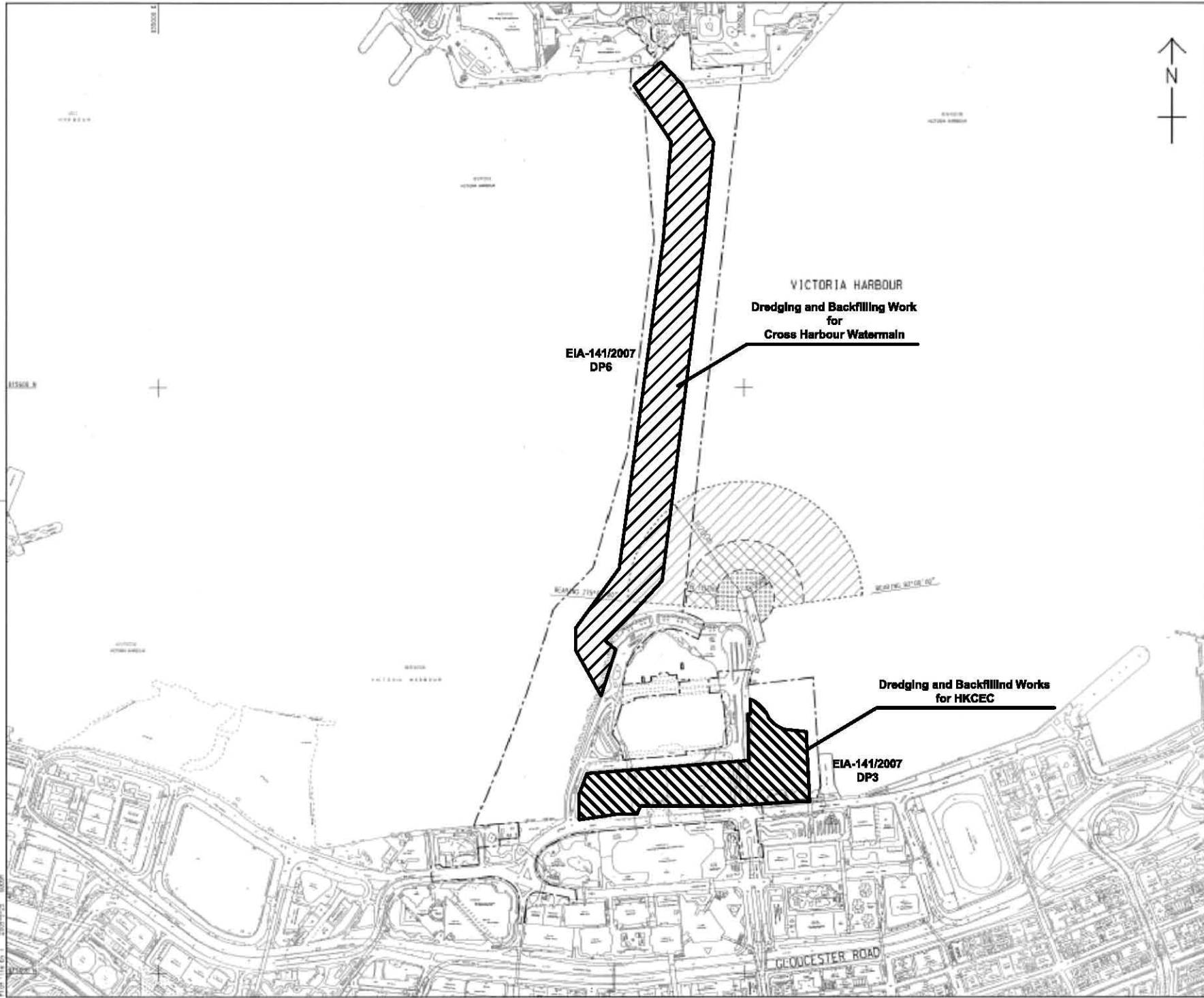
Highways Department 路政署  
Major Works Project Management Office

CENTRAL - WAN CHAI BYPASS AND IEC LINK  
CENTRAL - WAN CHAI BYPASS - NORTH POINT RECLAMATION

PORTION OF SITE  
SHEET 1 OF 2

**AECOM**

DRGNO. 圖紙編號	60095653/NP/1651B
DESIGNED BY 設計人	TTF
CHECKED BY 校核人	CJH
DATE 日期	AT 17 1000 11 DEC 2009
SCALE 比例	1:1000
UNIT 單位	METRES
CONTRACT NO. 合約編號	HW/2009/11
APPROVED BY 核准人	CW
<b>WORKING DRAWING</b>	
COPYRIGHT RESERVED 版權保留	



LOCATION PLAN  
SCALE 1 : 5000

- NOTES:
1. ALL DIMENSIONS ARE IN METRES UNLESS OTHERWISE NOTED.
  2. THE RESTRICTION ZONE IS THIS DRAWING WILL COME INTO EFFECT AFTER THE OPERATION OF THE GOVERNMENT HULLING AT EDP/D/D/E LAST.

LEGEND:

- CONTRACT BOUNDARY
- [Hatched Box] WORKING RESTRICTION ZONE
- [Cross-hatched Box] NAVIGATION AND WORKING RESTRICTION ZONE
- [Dotted Box] WORKING BARGE, NAVIGATION AND WORKING RESTRICTION ZONE

TENDER ADDENDUM NO. 4	DATE: 21/11/09	SEP 09
TENDER ADDENDUM NO. 1	DATE: 21/11/09	SEP 09
TENDER DRAWING	DATE: 21/11/09	SEP 09

CEDD 土木工程發展署  
Civil Engineering and Development Department

WAN CHAI DEVELOPMENT PHASE II

WAN CHAI DEVELOPMENT PHASE II -  
CONCRETE - P&I (PLAN) (SHEET 01)  
KONG KONG CONVENTION AND EXHIBITION CENTRE  
**RESTRICTED ZONE FOR  
CONSTRUCTION VESSELS**  
(Contract no: HK/2009/01)

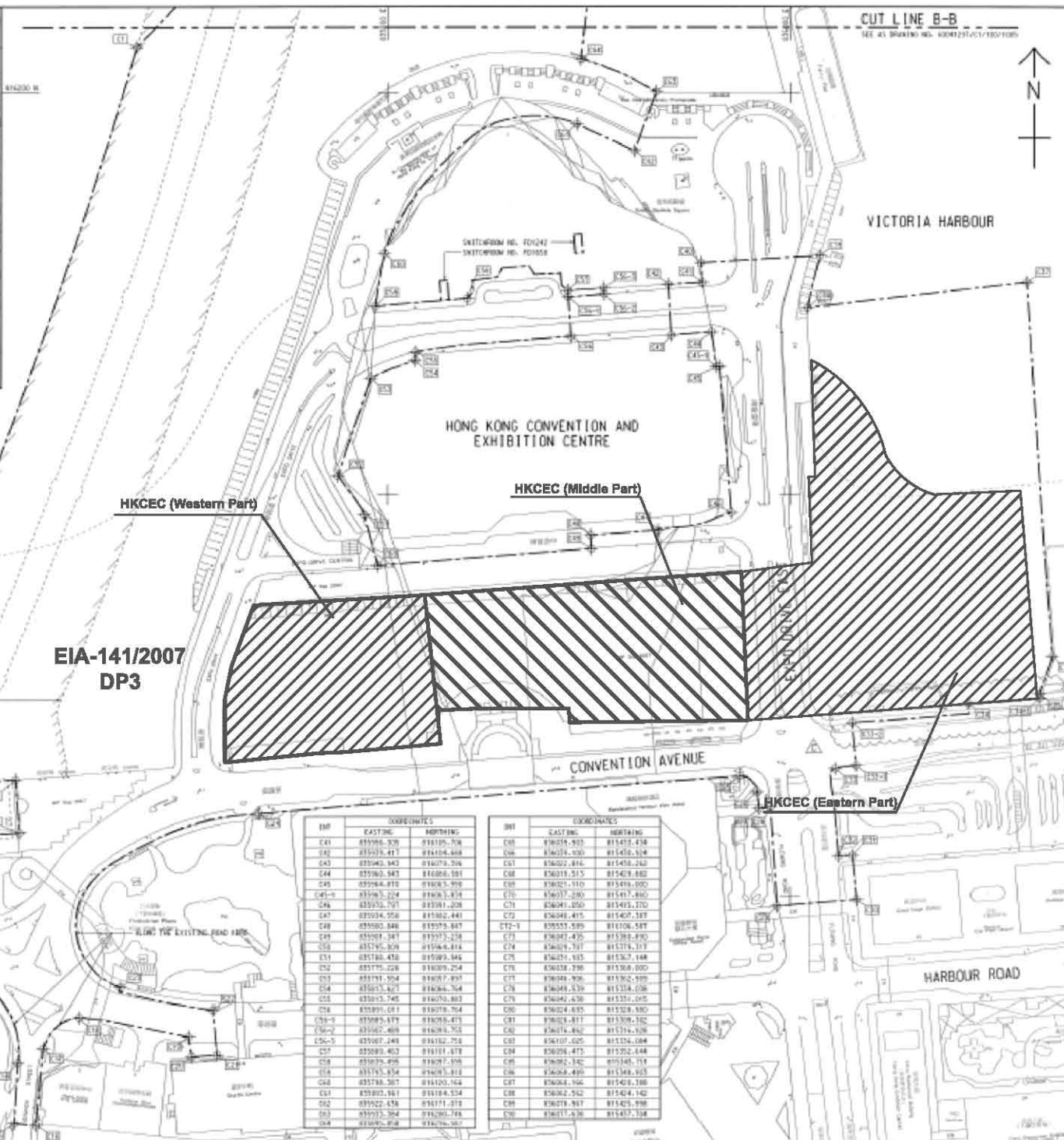
**AECOM**

DRGNO. 圖號	60041297/C1/100/1010B		
DATE 日期	REVISED BY 修改人	DATE 日期	BY 由
01	AKSY	16/2/2009/01	PMC
SCALE 比例	AS 1:8000		
COPYRIGHT RESERVED			



INSET 'A'  
SCALE 1:1000

CENTRAL DISTRICT



EIA-141/2007  
DP3

INT	COORDINATES	
	EASTING	NORTHING
C41	835986.526	818105.708
C42	835979.417	818104.468
C43	835963.943	818079.706
C44	835963.543	818086.581
C45	835964.818	818085.528
C46	835965.504	818085.514
C46	835975.757	818081.208
C47	835974.956	818082.441
C48	835980.846	818079.887
C49	835981.347	818077.238
C50	835976.828	818066.814
C51	835984.478	818080.846
C52	835975.226	818089.224
C53	835971.504	818077.897
C54	835975.627	818084.764
C55	835973.745	818079.883
C56	835991.071	818078.764
C56-1	835995.679	818078.873
C56-2	835982.468	818078.765
C56-3	835987.248	818182.758
C57	835983.403	818181.878
C58	835978.498	818087.198
C59	835978.574	818085.818
C60	835978.507	818120.164
C61	835980.881	818184.524
C62	835982.434	818171.812
C63	835973.504	818080.788
C64	835975.818	818076.507

INT	COORDINATES	
	EASTING	NORTHING
C65	836018.933	818413.438
C66	836034.030	818413.614
C67	836022.816	818413.240
C68	836019.515	818413.882
C69	836021.110	818414.000
C70	836027.289	818417.880
C71	836041.050	818413.270
C72	836048.415	818407.187
C72-1	835555.589	818106.587
C73	836047.435	818385.890
C74	836049.797	818374.107
C75	836071.935	818382.148
C76	836038.298	818368.000
C77	836048.906	818362.898
C78	836048.439	818334.038
C79	836042.630	818331.015
C80	836024.635	818328.880
C81	836028.417	818308.182
C82	836071.882	818374.148
C83	836107.025	818324.084
C84	836098.473	818322.444
C85	836082.342	818348.714
C86	836084.499	818348.925
C87	836084.196	818348.388
C88	836082.512	818348.142
C89	836078.987	818345.898
C90	836071.630	818347.198



KEY PLAN  
SCALE 1:10000

NOTE:  
1. FOR NOTES & LEGEND, REFER TO DRAWING NO. 60041297/C1/100/1006.

INT	COORDINATES	
	EASTING	NORTHING
C1	835879.205	818222.551
C2	835979.971	818282.299
C3	836414.561	818284.825
C4	836417.020	818281.014
C5	836582.492	818295.522
C6	836581.564	818288.612
C7	836586.545	818281.197
C8	836586.191	818287.147
C9	836486.433	818282.241
C10	836481.082	818287.050
C11	836485.389	818288.075
C12	836487.486	818288.107
C13	836523.460	818284.817
C14	836486.433	818287.122
C15	836474.285	818288.500
C16	836475.195	818285.525
C17	836488.139	818284.441
C18	836446.085	818288.816
C19	836181.421	818280.587
C20	836202.537	818282.881
C21	836215.285	818274.484
C22	836213.182	818282.543
C23	836207.086	818288.074
C24	836226.984	818283.670
C25	836215.280	818288.251
C26	836201.647	818282.286
C27	836204.025	818283.836
C28	836206.218	818284.445
C29	836201.523	818288.180
C30	836203.781	818288.487
C31	836211.216	818288.470
C32	836204.142	818282.117
C33	836221.081	818284.482
C34	836226.290	818284.700
C35	836227.428	818284.286
C36	836208.187	818288.280
C37	836224.812	818288.085
C38	836224.747	818282.285
C39	836228.850	818288.134
C40	836218.190	818288.037
C41	836228.810	818287.285
C42	836218.906	818288.086
C43	836205.682	818285.512

C	TENDER ADDENDUM NO.4	SHEN JYL DEP C8
B	TENDER ADDENDUM NO.2	SHEN JYL DEP C8
A	TENDER ADDENDUM NO.1	SHEN JYL DEP C8
-	TENDER DRAWING	SHEN JYL DEP C8
20	2009	SEP 08


**土木工程發展署**  
 Civil Engineering and Development Department  
**WAN CHAI DEVELOPMENT PHASE II**  
 WAI CHI DEVELOPMENT PHASE II -  
 CENTRAL AND WEST DISTRICTS  
 HONG KONG CONVENTION AND EXHIBITION CENTRE  
**SITE BOUNDARY SETTING OUT PLAN**  
 (Contract no. HK/2009/01)

**AECOM**  
 DRGNO. 60041297/C1/100/1006C  
 SHEET NO. 1 OF 1  
 DATE: 08/2009  
 DRAWN BY: JYL  
 CHECKED BY: JYL  
 APPROVED BY: JYL  
 SCALE: AS SHOWN  
 COPYRIGHT RESERVED



港口  
HARBOUR



LEGEND:



WORKS AREA



DREDGING AREA FOR  
MITIGATION OF ODOUR(DP3)



SITE BOUNDARY



中國建築工程(香港)有限公司  
CHINA STATE CONSTRUCTION ENG. (HONG KONG) LTD.

Highways Department  
CONTRACT NO. HY/2009/15  
CENTRAL-WAN CHAI BYPASS - TUNNEL  
(CAUSEWAY BAY TYPHOON  
SHELTER SECTION)

TITLE  
LOCATION PLAN OF WORKS AREA

DRG. NO.  
CWBT/EPD/001B

SCALE  
1:1000 @ A0  
DATE  
MAY 2010 08 11  
MILLIMETERS  
COPYRIGHT RESERVED

維多利亞公園  
Victoria Park

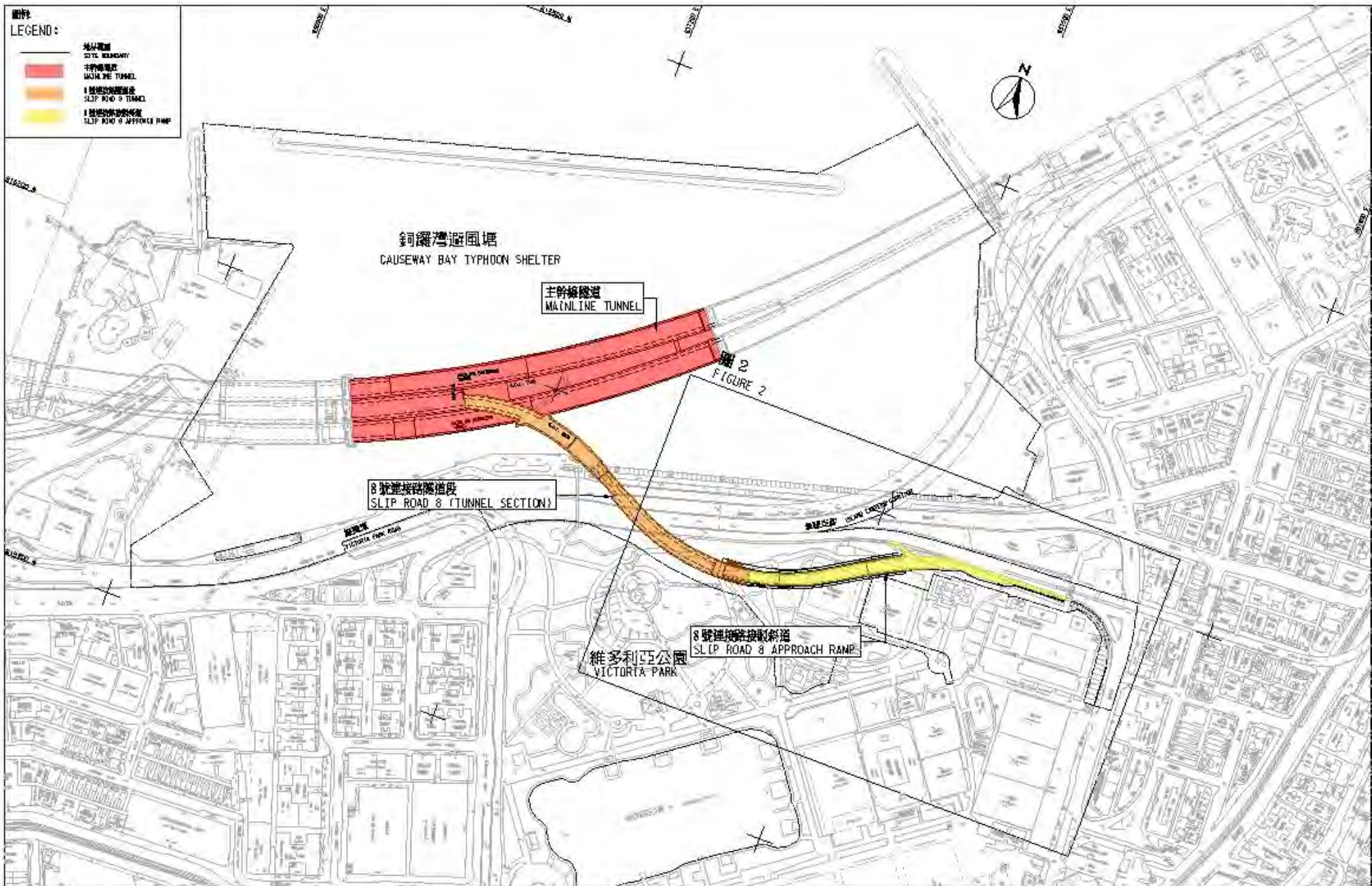


圖 1 - 合約編號 HY/2010/08 中環灣仔繞道-8號連接路段隧道

FIGURE 1 - CONTRACT NO. HY/2010/08 - CENTRAL - WAN CHAI BYPASS - TUNNEL (SLIP ROAD 8 SECTION)



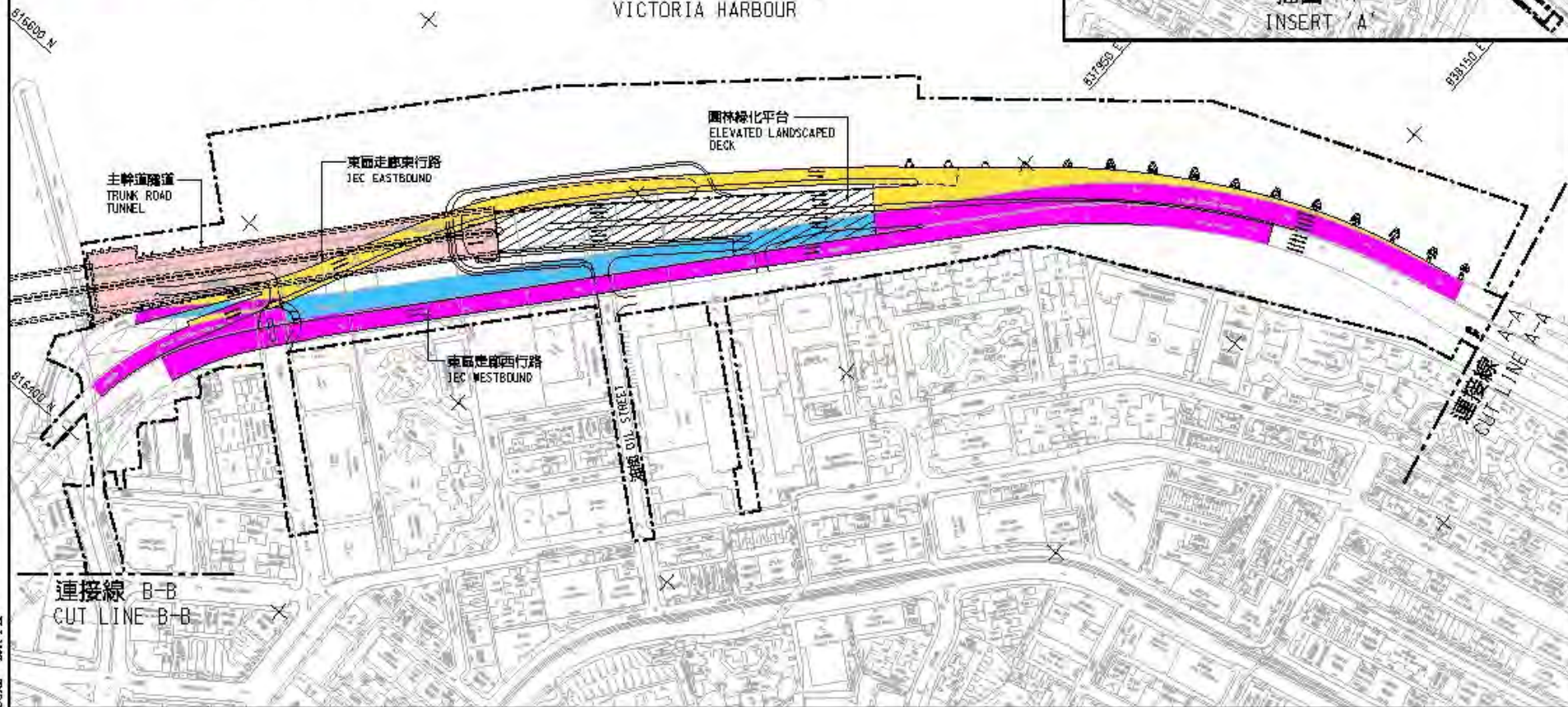
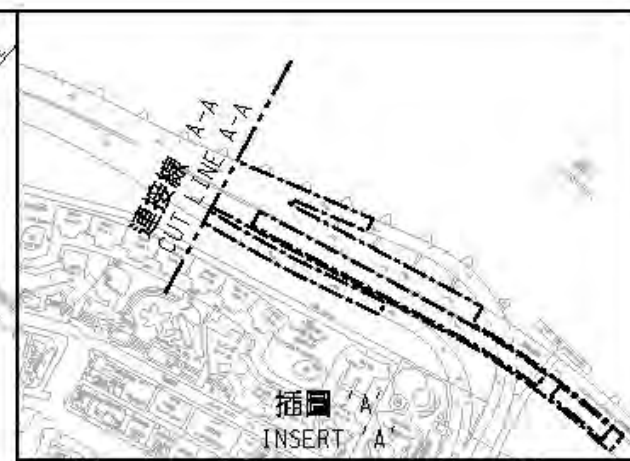


圖例：  
LEGEND:

-  地界範圍  
SITE BOUNDARY
-  園林綠化平台  
LANDSCAPED DECK
-  主幹道隧道  
TRUNK ROAD TUNNEL
-  擬議高架道路  
PROPOSED ELEVATED CARRIAGEWAY
-  現有高架行車道將予拆卸  
EXISTING ELEVATED CARRIAGEWAY TO BE DEMOLISHED
-  現有高架行車道將予拆卸及重建  
EXISTING ELEVATED CARRIAGEWAY TO BE DEMOLISHED AND RECONSTRUCTED



維多利亞海港  
VICTORIA HARBOUR



合約編號 HY/2009/19 - 中環灣仔繞道 - 北角段隧道及東區走廊連接路

CONTRACT NO. HY/2009/19 - CENTRAL-WAN CHAI BYPASS - TUNNEL (NORTH POINT SECTION) AND ISLAND EASTERN CORRIDOR LINK

SCALE 1 : 3000